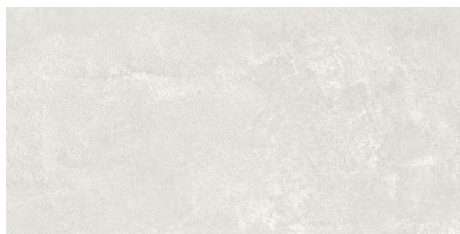


# Crossville Studios

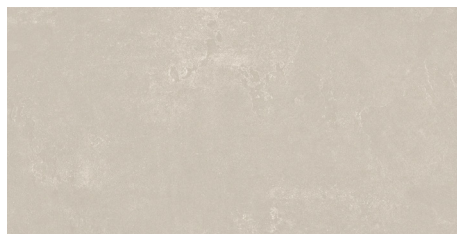


## AT THE CAFE 2CM WHITE

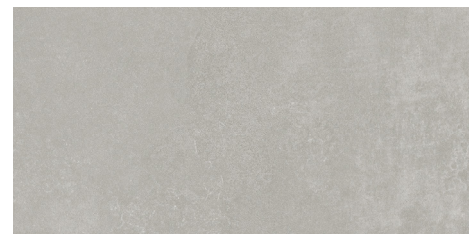
At the Cafe recreates a minimal cement look, enhanced, at times, by an iridescent touch that can be seen when light reflects off the product. The color palette fits easily into any outdoor space and is based on the typical hues found in cement.



WHITE



BEIGE



GRAY



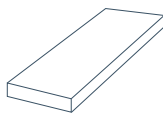
GRAPHITE

### Available Sizes

Thickness 2 cm  $\approx$



24 x 24  
Rectified



12 x 24

Pool Coping with  
Modern Edge  
2cm thickness



### Technical Specifications

Product Performance	Tile	Result	Testing Method
Water Absorption	All	$\leq 0.1\%$	ASTM C 373
Breaking Strength	All	$\leq 3000$ lbf	ASTM C 648
Frost Resistance	All	Resistant	ASTM C 1026
DCOF Wet	All	$\geq 0.60$	ANSI A 326.3
Chemical Resistance	All	Class A	ASTM C 650 ASTM C 1378
Shade Variation	All	V2	
Usage	At the Cafe 2CM is suitable for exterior paving in commercial and residential areas.		

View other great product options and find detailed product specifications at [crossvillestudios.com](https://crossvillestudios.com)